



Wall Systems & Product Guide





Continuous Insulation (CI)

When you need an exterior cladding that's cost effective and greener, look no further than **CONTINUOUS INSULATION (CI) SYSTEMS** from Decoplast.

We offer a variety of systems that combine building performance with function. CI systems can be used on both residential and commercial projects and offer unlimited design options.



The benefits of using a CI SYSTEM from DECOPLAST include:

- *Durable wall assemblies that combine moisture protection with drainage*
- *Elimination of thermal bridging and enhanced building performance*
- *Design flexibility to adjust foam thickness within a system to increase energy efficiency and R values*
- *Long term warranties*



Energy codes are pushing for higher thermal performance values in commercial building walls, specifically in the form of exterior **CONTINUOUS INSULATION (CI)**. This particular approach increases thermal performance of the wall due to the elimination of thermal bridging.

As a result of the improved performance, energy efficiency and occupant comfort within the commercial building is noticeably increased.



- Hospitality
- Retail
- Outlets
- Residential
- Government
- Municipal
- Landmarks

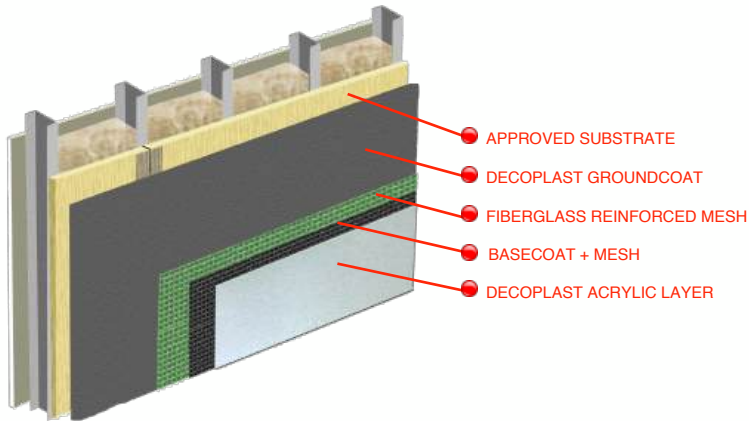
CONTINUOUS INSULATION, also known as *CI*, is defined by ASHRAE 90.1 as:

“Insulation that is continuous across all structural members without thermal bridges other than fasteners and service openings. It is installed on the interior, exterior, or is integral to any opaque surface of the building envelope.”



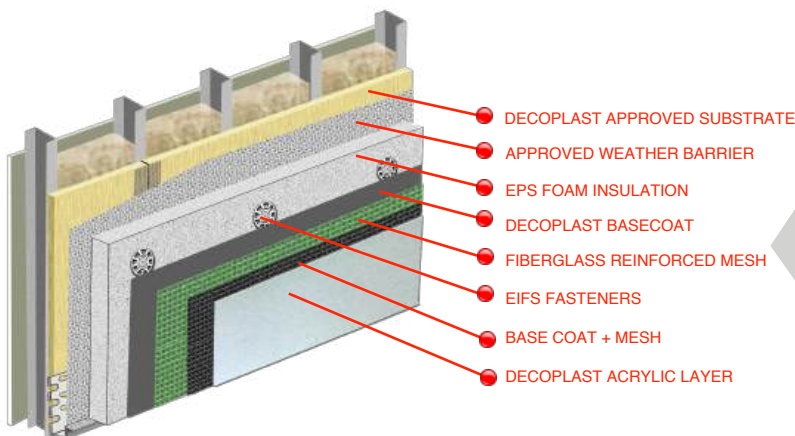


DDS Deco-Direct System with Groundcoat



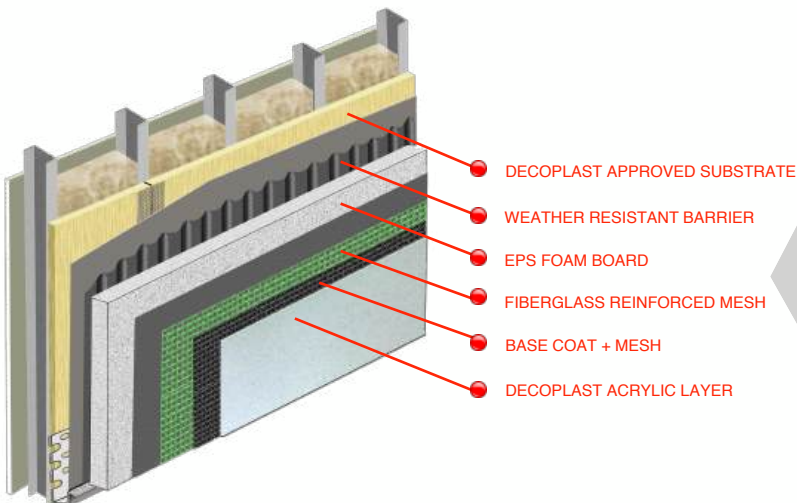
The **Deco-Direct System (DDS)** is another approach to an CI / Exterior Insulation and Finish System. This system is unique since it uses a special product available from Decoplast known as 'Groundcoat'. Decoplast ground coat is a multi-purpose product that is a weather resistive barrier as well as an adhesive and embedding coat. The Decoplast base coat, mesh and finish are added to complete the system.

Deco-Thermal System (Heritage Drainage System)



The **Deco-Thermal System** is ingenious in its design since it utilizes a product that creates a small void behind the foam boards which will allow any trapped moisture to make its way down to the starter track which contains weeping holes.

Deco-Drain Adhesive Release System

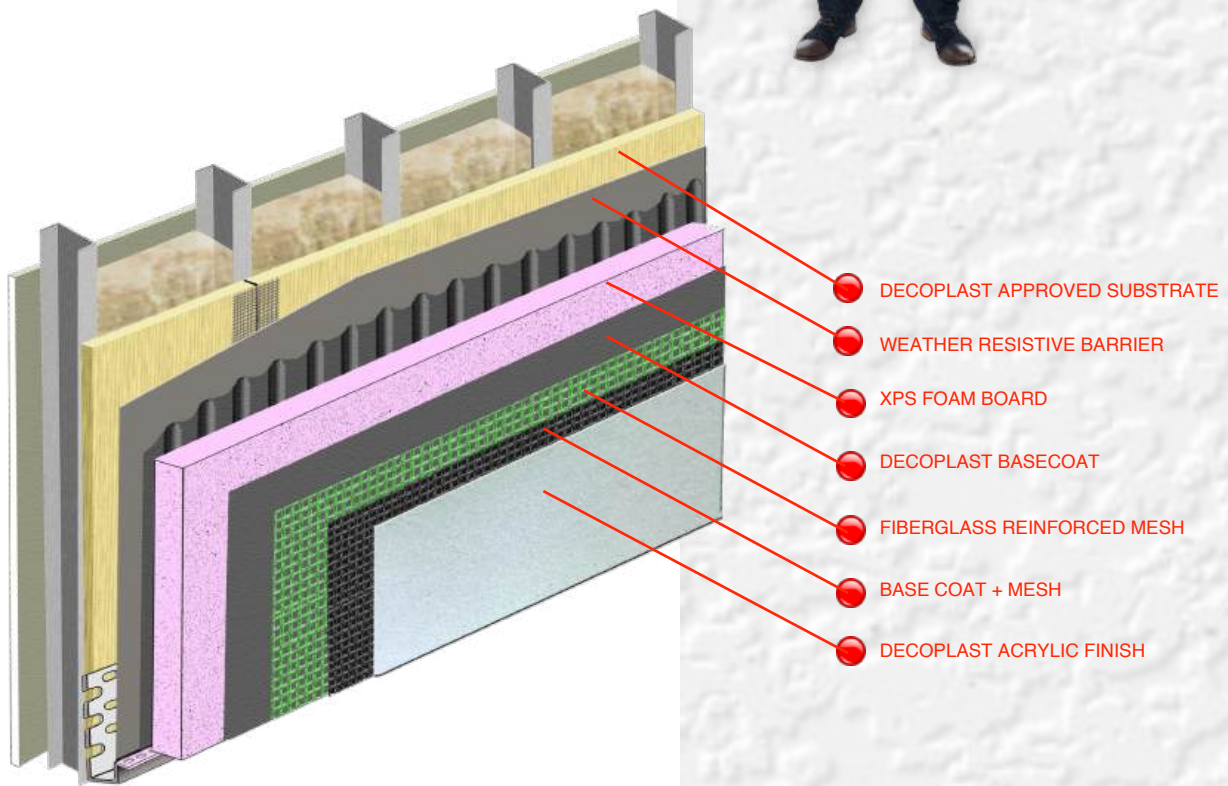


The **DECO-DRAIN Adhesive Release System (Notched)** refers to the use of a notched trowel to form vertical ridges in the basecoat. These ridges allow any trapped moisture between the substrate and system to escape at the bottom, preventing damage to the structure as well as the system itself. This "Water Drainage" system is ideal for moist climate and temperate zones. This system provides moisture drainage with a minimal use of materials, making it extremely cost-effective.



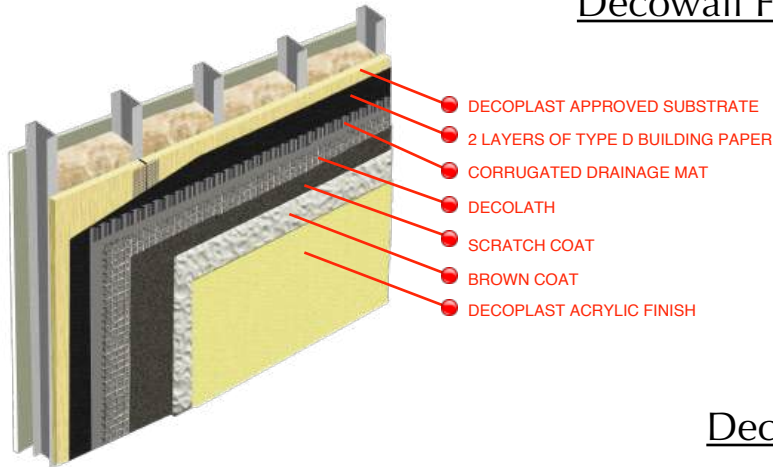
Deco-Drain Adhesive Release System - Notched XPS CI

A Continuous Insulation (CI) Moisture Managed Exterior Insulation and Finish System (EIFS) consisting of Liquid Applied Weather Resistive Barrier, Notched Basecoat Adhesive, Extruded Polystyrene Insulation (XPS) Board, Base Coat with embedded Fiberglass Reinforcing Mesh, Primer (Optional), and Textured Finish Coat.



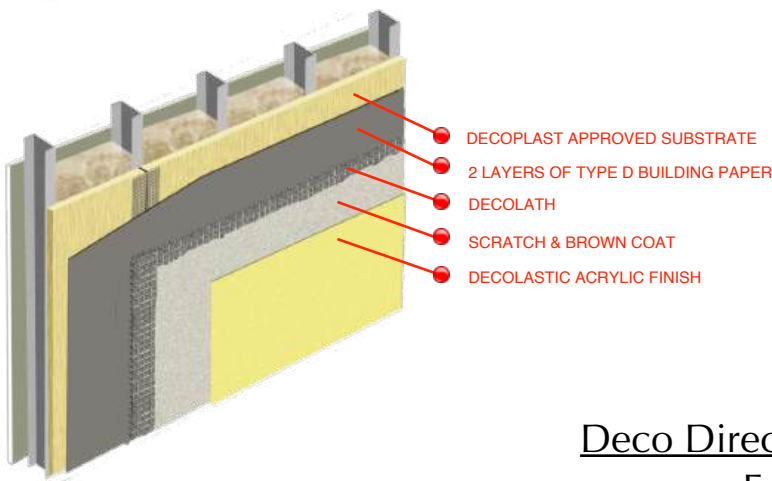


Decowall FRS with Drainage



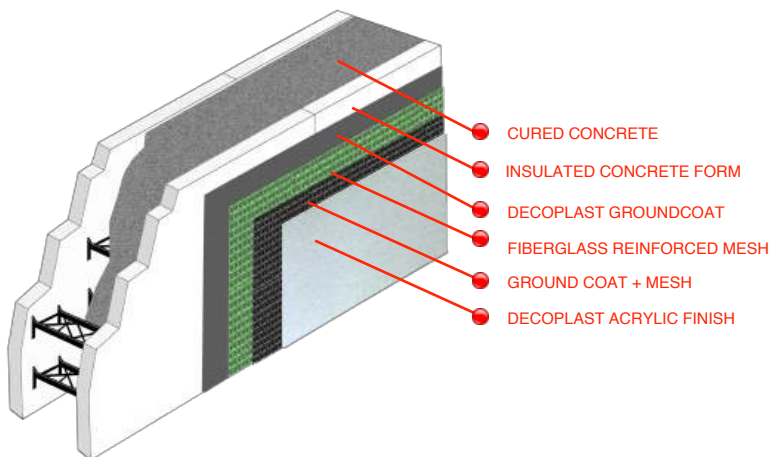
The **Decoplast FRS Drainage System** is a heavy-duty solid transitional stucco system that drains incidental moisture to protect any structure from harsh elements.

Decowall FRS



The **Decoplast Decowall FRS System** is a traditional cement stucco system that consists of lathing, scratch coat, brown coat, and a Textured Finish Coat.

Deco Direct Insulated Concrete Form System



The **Deco Direct Insulated Concrete Form System (DDICF)** is a unique, energy efficient system that has been engineered to be directly applied over insulated concrete forms. These lightweight forms are set into place at the job site and braced together. On its own, they are too light to bear any weight, however once filled with concrete and after they have cured, they are ready to be finished.

Items shown in this brochure are a representation of Decoplasts most popular systems and products. Additional products and systems may be available. Please contact your local Decoplast representative for additional information.

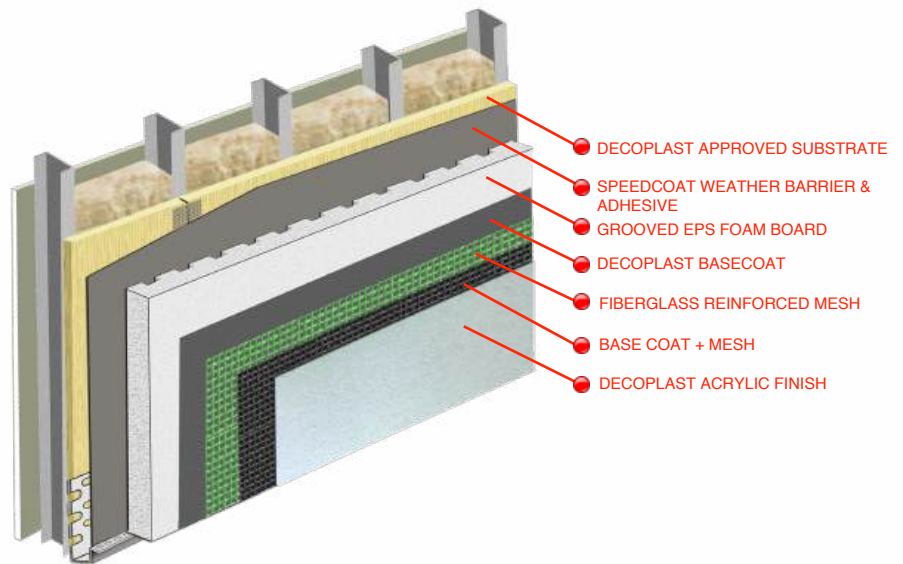


Deco-Drain Adhesive Release System - Speedcoat

The **DECO-DRAIN Adhesive Release System with Speedcoat** (DDARS) has been devised to incorporate our unique dual-purpose product Speedcoat.

Speedcoat is a weather resistive barrier and also a high-performance adhesive for the EPS foam boards. Trowel applied, this product saves time and money as there is less need for basecoat and the weather barrier is already in place.

The use of the grooved EPS foam gives the system it's water drainage capability thus making it versatile and long lasting.



decoTM Finishes



decoTM Elastomeric



"Flexible and durable, having the ability to stretch without delamination."

Decoplast Textured Finishes are ready-mixed, 100% acrylic-based, elastomeric exterior textured coatings used as decorative wall finish over all approved basecoats, prepared concrete, masonry and plaster substrates.

All Decoplast Acrylic finishes are designed to be durable, flexible and have the ability to resist the elements. Decoplast Acrylic finishes are made with 100% marble aggregate, rather than the typically used silica sand. This choice of materials makes our EIFS, CIFS and Stucco coatings one of the most environmentally friendly in the industry.

decoTM Hydrophobic

"The ability to resist water and dirt pick up"

Decoplast Decosil Finishes allow greater resistance to the elements by creating a water repellant self cleaning design. These specialty finishes have been designed to repel water and shed any dirt pick up allowing the finish to maintain a clean appearance.



Decoplast acrylic finishes, Decolastic 250 finishes and Decosil finishes are all available in any of our textures, as well as our 64 standard colors. We also offer custom color matching, which means an infinite number of color combinations.



deco Texture Options



Marmomix Mica

Decoplast Marmomix Mica is a 100% acrylic polymer material engineered to provide a durable and decorative finish. Decoplast Marmomix Mica finishes are architecturally decorative and will withstand thermal expansion and contraction without delamination. Custom colors and custom matches are available on request.



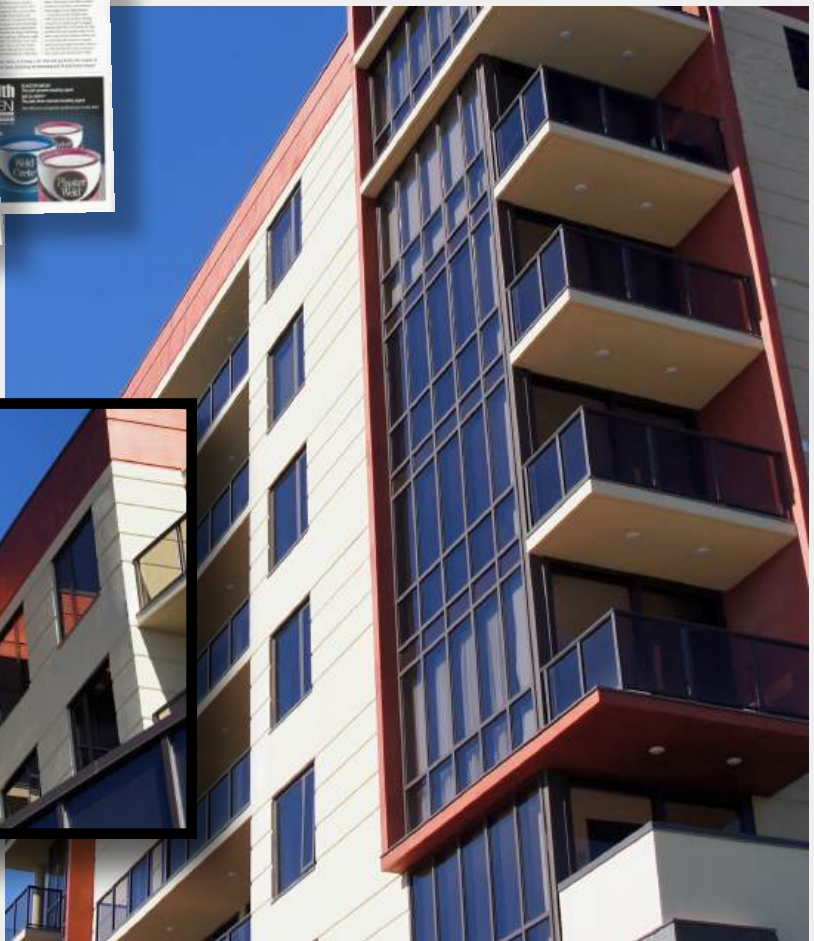
deco Metallics

Decoplast Metallic is a 100% acrylic based exterior and interior coating. Decoplast Metallic finish may be used over approved substrates, properly prepared vertical concrete, stucco, EIFS, masonry, or previously acrylic coated smooth or textured surfaces.

A variety of finish and application options are available; therefore, a Decoplast representative should be consulted during the specification process in order to achieve the design intent / aesthetic.



THE INTENT OF THESE COLOR CHIPS IS TO PROVIDE A BASIC REPRESENTATION OF DECOPLAST FINISH COLORS. THIS COLOR CHART IS OFFERED ONLY AS A SALES AID TO SHOW A RANGE OF COLOR VARIATIONS. THESE COLOR CHIPS SHALL NOT BE USED FOR FINAL COLOR SELECTION AS COLOR DIFFERENCES MAY OCCUR BETWEEN THE SAMPLE MATERIAL USED AND THE ACTUAL FINISHED PRODUCT. ACTUAL COLOR SELECTION SHOULD BE MADE FROM A LARGER SAMPLE OF EACH FINISH/TEXTURE/COLOR TO BE USED ON THE PROJECT. SAMPLES SHOULD BE PREPARED BY A CERTIFIED APPLICATOR/CONTRACTOR USING THE SAME TOOLS AND TECHNIQUES PROPOSED FOR THE ACTUAL INSTALLATION.





A Product of:  **Greenmaker™**
INDUSTRIES

697 Oakwood Ave. West Hartford, CT 06110
Ph: 860-761-2830 Fax: 860-761-2831

www.decoplast.com